



iNON

YOUR PERSONAL LOCKER

2018 New



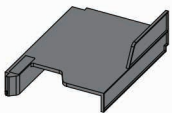
KOKUYO

Comfortable storage capacity to fit the diversifying work style.

Personal locker "iNON" responding to diversifying work style.

With security management for individuals and storage of work tools comfortably for the ease of use.

iNON is designed to improve the work quality and office space.



Improve convenience by internal tray

All locker comes with an inner tray for better manage of your personal items and work documents.

The locker is designed in the way that all A4 document can be place vertically and horizontally at the same time.

In addition, it comes with compartment to let the user store their items in a tidy manner, thus keeping the internal of the locker tidy at all time.



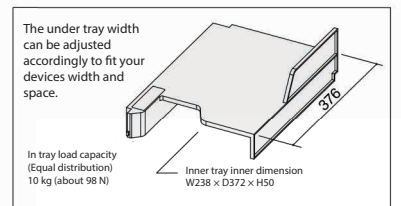
1 For stock documents and magazines, back labels are easy to see. It also prevents the items from falling sideways when taking out.



2 Frequently used documents, etc for A4, iNON comes with a compartment for easy retrieval with the depth that fits neatly.

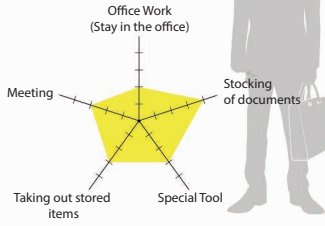


3 A space under the tray enable the user to store and keep their devices such as notebook PCs and tablets.



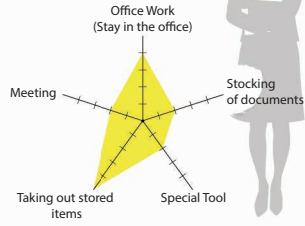
Sales Team

Spending most of the time outside of the office.



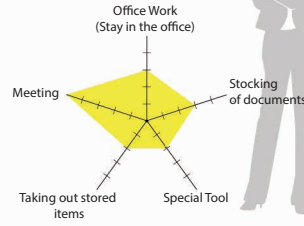
Administratives Team

Require more storage area for administratives items.



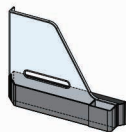
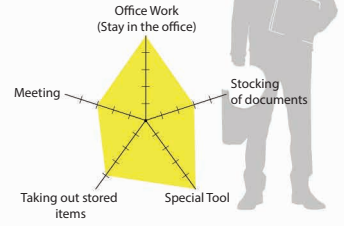
Planning / Marketing Team

Quality items are required to store safely in the lockers for easy accessibilities.



Development / Technology Team

Highly important documents and information should be store in a more secure manner.



Behind the door tray make storage easier

We realise by designing a tray behind the door, it helps the user to keep all small items.

By placing various small items in front, it prevents scattering and mess-up inside the cabinet thus improves the ease of use inside the cabinet.



Mail Pocket



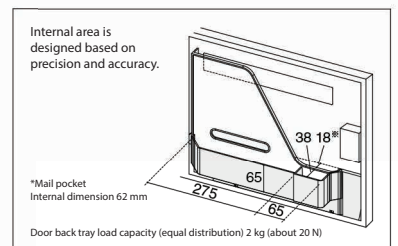
A4 Documents can be easily slot into the mail pocket. It neatly store all your small items in a more effective way and prevent from falling out of the tray.



With the tray partition in half clear finished, your documents can be easily be seen. A pocket hole is designed so that user can use their fingers to adjust the documents.



You can also remove the tray partition. By doing so, you could place more small items.





Open Spaces



Pockets of opening spaces enable the user to store some large items example boxes.



Pockets of opening spaces at the middle section of the cabinet enable the user to place items that can be easily retrieve on the go.

Internal wiring function



Wire management allows the wire to run from the ground level to within the cabinet. This way, you could even charge your electronic equipments within the cabinet.

Security function that can select from 4 types of lock



Key Cylinder

The easier and conventional way of securing the items. Optional master key is available upon request.



Dial Lock

Secure without using a key. Lock comes in 4 digital passwords that safely secure the items.



Push Cylinder Auto Lock

Secure without using a key. Push button number set. Unlock and lock in combination, when locking of the door.



IC Card Lock

Secure without using a key. This is the highest security method. Opening the door by using an access card.

Variation



For 4 Pax



For 4 Pax
(with bottom opening)



For 6 Pax



For 8 Pax



For 8 Pax
(with bottom opening)



For 8 Pax
(with middle opening)



For 10 Pax

Cylinder	NPL-4M39SAW	NPL-4KM59SAW	NPL-6M59SAW	NPL-8M69SAW	NPL-8KM79F6	NPL-8CKM79F6	NPL-10M79F6
Dial Lock	NPL-4DM39SAW	NPL-4KDM59SAW	NPL-6DM59SAW	NPL-8DM69SAW	NPL-8KDM79F6	NPL-8CKDM79F6	NPL-10DM79F6
Push Auto Lock	NPL-4APM39SAW	NPL-4KAPM59SAW	NPL-6APM59SAW	NPL-8APM69SAW	NPL-8KAPM79F6	NPL-8CKAPM79F6	NPL-10APM79F6
IC Card Lock	NPL-4CLM39SAW	NPL-4KCLM59SAW	NPL-6CLM59SAW	NPL-8CLM69SAW	NPL-8KCLM79F6	NPL-8CKCLM79F6	NPL-10CLM79F6
External	W900xD450xH740	W900xD450xH1110	W900xD450xH1110	W900xD450xH1480	W900xD450xH1850	W900xD450xH1850	W900xD450xH1850
Internal	W412xD382xH328/ W862xD448xH320/	W412xD382xH328/ W862xD448xH320/	W412xD382xH328/ W862xD448xH320/	W412xD382xH328/ W862xD448xH320/	W412xD382xH328/ W862xD448xH320/	W412xD382xH328/ W862xD448xH320/	W412xD382xH328/ W862xD448xH320/

Color Sample

Body / Base



SAW



F6

Top Panel



PAW



M10



MP2



MG5



Optional
Magnetic business card
holder.

iNON

*For more information on Spline, please refer to KOKUYO 2018 Japanese master catalogue P.514

<http://www.kokuyo-furniture.com>

Use of personal information

The purpose of using the acquired personal information will be specified and clearly informed. Use of personal information is limited to authorized personnel, who are responsible for ensuring its use remains within the intended purpose that was initially specified. In the event that personal information is used collaboratively by KOKUYO group, necessary items including the purpose of use will be clarified as much as possible. No part of this brochure may be reproduced without written permission.

KOKUYO

OSAKA | TOKYO | SHANGHAI | BEIJING | SHENZHEN | HONG KONG | SINGAPORE | KUALA LUMPUR | BANGKOK

201711A07TS
2017-220