

Any Chair

High Chair
High Bench

Unexpected ideas come from a quick stand-up conversation.
High stools and high benches for airy communication.



WELLUP

GOOD DESIGN AWARD 2023

BEST 100

Awarded for "Any way" in 2023

VARIATION

A high chair and high bench that can be set with a H1000mm table. The simple design and light mobility prompts quick communication.



FUNCTION



Small castors for smoother manoeuvrability

Any high chair adopts small maneuverable castors in the same color matching the main unit. It accompanies the body's movements, and allows for effortless movement.



Castors and back frame for enhanced comfort of use

The simple design of the back frame provides a handy grip to be held while sitting or alighting the chair.



Under-frame for easy carrying

The high bench adopts a handrail under-frame to be held when carrying the bench thus keeping the upholstery clean.

Seat cushion structure



Plano-convex shaped seat with a firmer middle core. The molded urethane foam cushion completes seating comfort and suitable for everyday, high-traffic use.

Poly backrest and Poly back frame with antibacterial agent (High stool only)



99% bacterial reduction after 24 hours compared to the surface not antimicrobial processed. Antimicrobial properties are based on testing in accordance with International Standard ISO22196.

*The antimicrobial performance is limited to the backrest of the chair.

COLOR & MATERIAL

	BK	E2	M1	Q6	39	9G	1S
Body (Poly)							
Seat (Fabric)							
	G2E6 Black	G2E2 Light gray	G2M1 White brown	G2Q6 Deep green	G239 Ash turquoise	G29G Ash pink	G21S Olive yellow

LINEUP

High Chair



K01-ZA11CU - BK G2E6 1



K01-ZA11CU - E2 G2E2 1



K01-ZA11CU - M1 G2M1 1



K01-ZA11CU - Q6 G2Q6 1



K01-ZA11CU - 39 G239 1



K01-ZA11CU - 9G G29G 1



K01-ZA11CU - 1S G21S 1

High Bench



K01-Z182CZ - BK G2E6 1



K01-Z182CZ - E2 G2E2 1



K01-Z182CZ - M1 G2M1 1



K01-Z182CZ - Q6 G2Q6 1



K01-Z182CZ - 39 G239 1



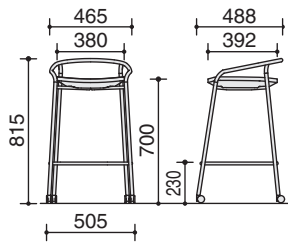
K01-Z182CZ - 9G G29G 1



K01-Z182CZ - 1S G21S 1

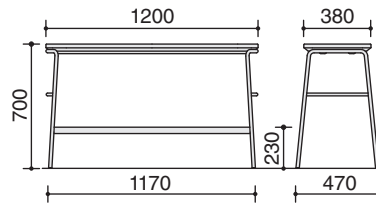
DIMENSIONS

High Chair



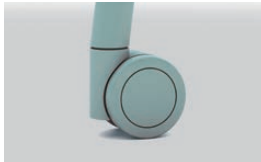
K01-ZA11CU

High Bench



K01-Z182CZ

OTHERS



Castors

- Polyurethane castors suitable also for hard floors, such as wood flooring.
- Rubber castors are not available on this product.

High Chair	Backframe : Polypropylene seat with antibacterial agent Seat : Polypropylene
High Bench	Seat : Molded plywood
Common	Seat cushion : Molded urethane Legs : Steel pipe (ø19.1, Powder coated)