



KOKUYO *ING*
360° Gliding Chair **ing**

profile

A revolutionary dual structure 360° gliding seat
for a truly unhindered experience





The essential of working, to become healthy both mentally and physically.
To do that, it is necessary to move our body. By moving joints and skeletal nodes,
the nerve cells are made to work well.
In the state of sitting,
'ing' draws out the natural movement of the body with a 360°gliding seat.

development

The human body is built to move.

KOKUYO's 'ing' mechanism was born from this fact.





'ing' is equipped with a gliding mechanism which freely moves 360° according to the subtle movements of the human body. It follows a forward tilt and backward tilt, up to left and right and diagonal twists, by a combination of two layers of mechanisms. It brings out natural movements and activates the body and brain.

conditioning

Feel of becoming one
with the chair.

The natural movement
of our body while sitting on 'ing' draws out
the "ing effect" that makes us active
and provide a comfortable rhythm
for creative thinking.



POSTURE

The 360° free-moving seat suitable
in accordance to difference in body physique.
ing creates the natural backbone curvature that allows
for an even distribution of weight
and flexibility of movement while working.



The gliding seat that supports individual's work posture.

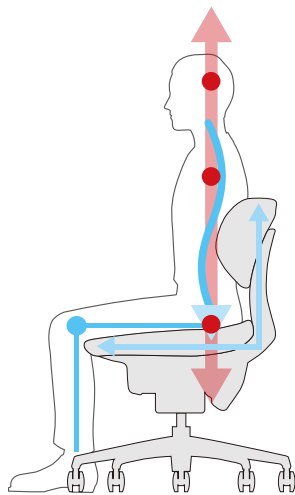
ing responds to every subtle body movement with a smooth glide maintain ones' posture. Whether sitting still or moving in the seat, ing supports the working posture.



Standing posture

The standing posture - Less strain on the upper torso

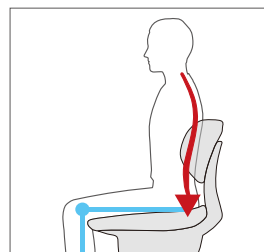
When in the standing upright-position, the body forms a natural spinal S-shape curve. This is when straight alignment is formed from the ears, shoulders and pelvis. This standing position allows even distribution of weight and said to have the least amount of strain on the body.



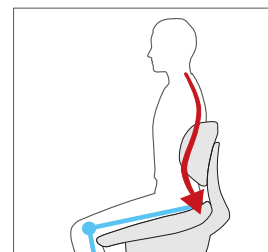
Sitting posture

Posture support - Fit for body shapes

ing's 360° glide follows the natural pelvic angle to maintain the body's natural spinal S-shape curve keeping the body aligned with complete freedom of movement.



Fair S-shape curve



Strong S-shape curve

Fits various body shapes without adjustment

The pelvic tilt angle that forms the body's spinal S-shape curve differ among individual. ing's free-moving gliding mechanism is suitable for various body shapes and physique.

Befitted to various sitting postures.

Support and maintain body posture for all work life.

Whether arching your weight from left to right or leaning forward, the chair supports your posture at all time.



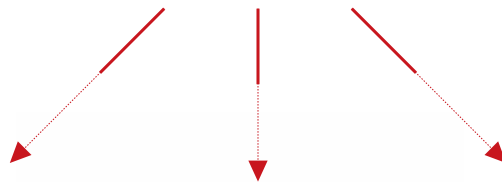
Adjusts to maintain body posture naturally when leaned forward at the computer.



The body's natural spinal S-shape curve posture.



Lean back to ponder, the chair will fit seamlessly.



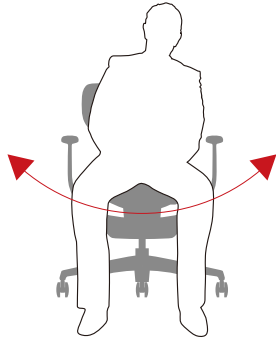
Refresh with unrestricted postures with freedom to move.



Twist the body while gripping the arms to refresh.

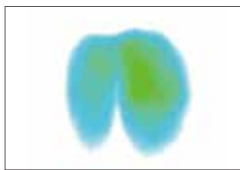


Mesh backrest that enables lighter movements.

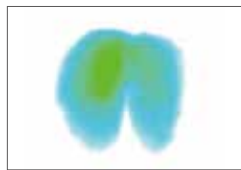


Always follow and dynamically distribute body pressure.

Gliding mechanism that moves 360 ° back and forth, left and right, always follows the movement of the body while gliding. This way no body pressure concentrates on one point but the pressure is evenly distributed accordingly.



Leaning to the left

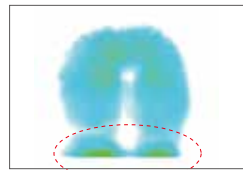
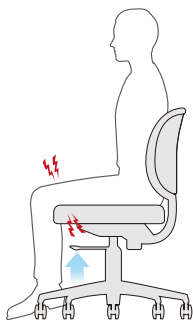


Leaning to the right

< Weight pressure distribution >
Kokuyo test verification

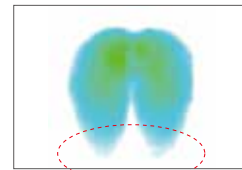
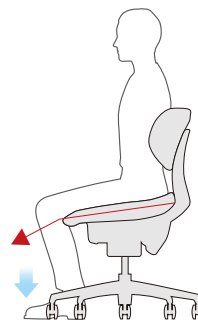
Responds to physical differences without adjustment.

ing adopts a soft "frontal free tilt" in which the front part gently curls inwards responding to various body physique and posture of an individual.



Conventional office chair

Excessive pressure on the under thighs



ing chair

Less pressure on the under thighs

< Weight pressure distribution > Kokuyo test verification

"ing" to shape "task seating posture"

The common chair's original purpose to provide rest has evolved as a means to perform a task at hand, now widely known as the task chair. In order to perform any task at hand, the human body requires unrestrictive movement as well as corrective spinal working posture. "ing's" development to support this working

posture has been realized with 360° glide movement with dual structure mechanics.

"ing" dual structure mechanics follows subtle movements of the body to maintain one's individual spinal alignment and with unrestrictive movement, thus creating the working posture necessary for the task chair.

Precision engineered dual structure gliding mechanism realizes a 360° movement for an unhindered seating experience.

Available in two back designs(Wide or Tall),

with weight pressure distributing seat and seat lock.

Optional adjustable arms for desk work, the diverse collection of ing is designed for a multiple of scenes.

PRODUCT

A gliding movement enabling unrestricted free-movement of the body.



Dual structure gliding mechanism follows the movement of body from forward to back tilt and side tilt to enable intricate twists of the body. The non-tension spring glide motion imitates that of a swing with a light swing back after a movement to always keep the user in control.

360° Gliding mechanism

A revolutionary gliding mechanism that moves freely with subtle movements of the body, this is the 360° gliding mechanism.

A whole new seating experience to realize a smooth and unhindered gliding sensation.



Dual structure mechanism to realize a 360° movement.

The ing dual structure comprises an upper structure for back and forward tilt, and the bottom structure for side tilts. This is the operating heart of ing for a new sensation of a 360° movement. The movement of an individual on a chair while seated is different amongst us, the ing mechanism adopts a gliding motion to cater for the subtle difference in body movement. This specific smooth gliding sensation is unique only to ing.

A natural swing back of a swing.

The dual gliding mechanism is comprised without tension springs for a natural gliding effect. This imitates the swing back motion of a swing brought by only the gravity pull for a truly natural gliding motion. Just like a swing, this requires no adjustment of tension strength dependent on an individual's weight.



Precision engineered dual mechanism.

A revolutionary design and unprecedented office chair with precision engineering, the ing chair with its dual structure mechanism brings a gliding chair for a whole new seating experience.

Functions to enhance the seating experience and conditioning.

ing incorporates features to achieve effective gliding,
with each measure to peruse and support the best working posture.



3D posture support seat

Weight pressure distributing seat.

The 3D posture support of ing, adequately disperses body weight and prevents sliding when leaned forward.



360° gliding

The gliding naturally creates the spinal S-shaped curve of the backbone. The backrest design ergonomically designed to support maintain spinal S-shape curvature.



Fixed grip arms

The arms are independent to the glide, allowing complete movement while gripping the arms. The front of the grip is covered with padded cushion to be gripped with ease and confidence.



Adjustable grip arms

The arms are independent to the glide, allowing complete movement while gripping the arms. The front of the grip is covered with padded cushion to be gripped with ease and confidence. Height adjustable : 100mm, Angle adjustment: Inwards 60°



Gliding stopper

(Gliding On/Off modes)

Switch between the gliding mode and non-gliding mode to preference. The off mode locks the chair in the upright position. (Anti-sway lock included on all models to stop swaying when not in use)



Front free tilt

Relieves pressure on the under side of the thighs. The frontal part of the seat gently curls inwards responding to various body physique and posture.



Selection of backrest types and finishes.
 (Tall back upholstered, Wide back upholstered, or Tall back mesh)



Backrest types each with distinct different gliding feels



Tall back
 (Fabric)

Only model equipped with an extra backrest bend for extra back movement of the upper body. This adds comfort to swaying while leaning back.



Wide back
 (Fabric)

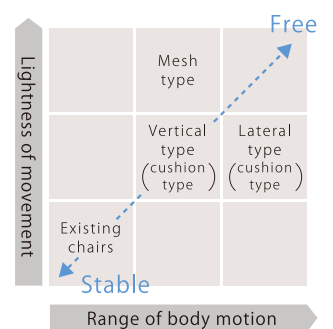
The wide back is equipped with extra side support and available as a low-back allowing to stretch freely and unhindered.



Tall back
 (Mesh)

The mesh type allows the body to glide and sway even more lightly and naturally. Although the backrest bend is not equipped, the mesh backrest flexibly supports the body.

Gliding feel



- Lightness of movement = Less force needed to change posture
- Range of body motion = Scope of body movement

SCENE

The wide back ing with a low backrest enhances a spacious and open office.

Being able to move the body more freely, ideal for meetings and brain storming.



Activate creativity

More lightly more flexibility



Dynamism to executives



Max movement with height adjustable desks







ing Mesh back

Tall back



5-star base	Body color	Adjustable arms		Polished fixed arms		Nylon fixed arms				
		Product code		Product code		Product code				
Polished aluminum	White	CR-GA3413 E1	G4B6-G4E3-G4M6-G4M4 G406-G4Q4-G4T7-G439 G47E-G49G-G40T-G41S	-W-V	CR-GA3443 E1	G4B6-G4E3-G4M6-G4M4 G406-G4Q4-G4T7-G439 G47E-G49G-G40T-G41S	-W-V	—		
	Black	CR-GA3413 E6	G4B6-G4E3-G4M6-G4M4 G406-G4Q4-G4T7-G439 G47E-G49G-G40T-G41S	-W-V	CR-GA3443 E6	G4B6-G4E3-G4M6-G4M4 G406-G4Q4-G4T7-G439 G47E-G49G-G40T-G41S	-W-V	—		
White nylon	White	CR-GW3413 E1	G4B6-G4E3-G4M6-G4M4 G406-G4Q4-G4T7-G439 G47E-G49G-G40T-G41S	-W-V	—	—	—	CR-GW3403 E1	G4B6-G4E3-G4M6-G4M4 G406-G4Q4-G4T7-G439 G47E-G49G-G40T-G41S	-W-V
Black nylon	Black	CR-G3413 E6	G4B6-G4E3-G4M6-G4M4 G406-G4Q4-G4T7-G439 G47E-G49G-G40T-G41S	-W-V	—	—	—	CR-G3403 E6	G4B6-G4E3-G4M6-G4M4 G406-G4Q4-G4T7-G439 G47E-G49G-G40T-G41S	-W-V

SH gas stroke: Standard 90mm Stroke 120mm available on request

Mesh back with adjustable headrest

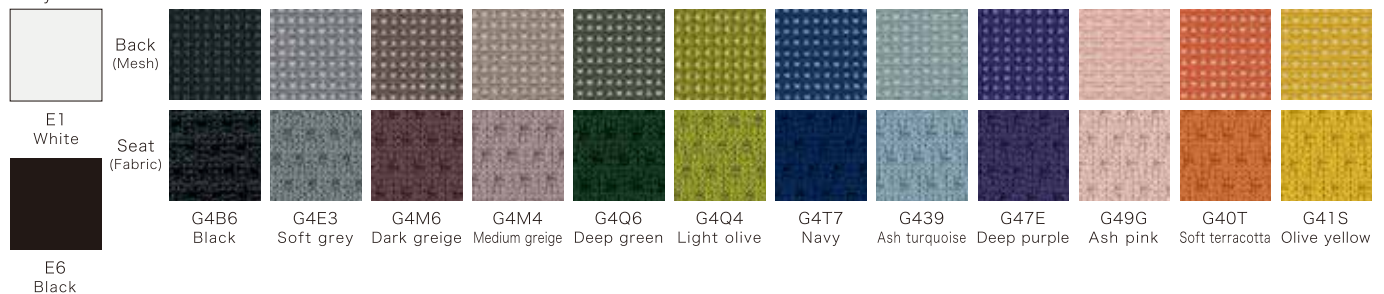


5-star base	Body color	Adjustable arms		Polished fixed arms		Nylon fixed arms				
		Product code		Product code		Product code				
Polished aluminum	White	CR-GA3415 E1	G4B6-G4E3-G4M6-G4M4 G406-G4Q4-G4T7-G439 G47E-G49G-G40T-G41S	-W-V	CR-GA3445 E1	G4B6-G4E3-G4M6-G4M4 G406-G4Q4-G4T7-G439 G47E-G49G-G40T-G41S	-W-V	—		
	Black	CR-GA3415 E6	G4B6-G4E3-G4M6-G4M4 G406-G4Q4-G4T7-G439 G47E-G49G-G40T-G41S	-W-V	CR-GA3445 E6	G4B6-G4E3-G4M6-G4M4 G406-G4Q4-G4T7-G439 G47E-G49G-G40T-G41S	-W-V	—		
White nylon	White	CR-GW3415 E1	G4B6-G4E3-G4M6-G4M4 G406-G4Q4-G4T7-G439 G47E-G49G-G40T-G41S	-W-V	—	—	—	CR-GW3405 E1	G4B6-G4E3-G4M6-G4M4 G406-G4Q4-G4T7-G439 G47E-G49G-G40T-G41S	-W-V
Black nylon	Black	CR-G3415 E6	G4B6-G4E3-G4M6-G4M4 G406-G4Q4-G4T7-G439 G47E-G49G-G40T-G41S	-W-V	—	—	—	CR-G3405 E6	G4B6-G4E3-G4M6-G4M4 G406-G4Q4-G4T7-G439 G47E-G49G-G40T-G41S	-W-V

SH gas stroke: Standard 90mm Stroke 120mm available on request

Color options

Body color



ing Fabric back

Fabric back

Adjustable arms

Polished fixed arms

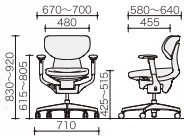
Nylon fixed arms



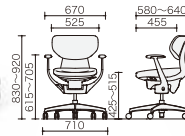
CR-GW3201 E1G41S-WN



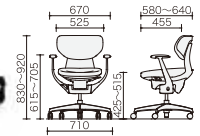
CR-G3211 E6G404-W



CR-GA3241 E1G40T-WN



CR-G3201 E6G4M4-WN



5-star base	Body color	Adjustable arms		Polished fixed arms		Nylon fixed arms	
		Product code	Product code	Product code	Product code		
Polished aluminum	White	CR-GA3211 E1	G4B6-G4E3-G4M6-G4M4 G406-G404-G4T7-G439 G47E-G49G-G40T-G41S -W-V	CR-GA3241 E1	G4B6-G4E3-G4M6-G4M4 G406-G404-G4T7-G439 G47E-G49G-G40T-G41S -WN-VN	—	
	Black	CR-GA3211 E6	G4B6-G4E3-G4M6-G4M4 G406-G404-G4T7-G439 G47E-G49G-G40T-G41S -W-V	CR-GA3241 E6	G4B6-G4E3-G4M6-G4M4 G406-G404-G4T7-G439 G47E-G49G-G40T-G41S -WN-VN	—	
White nylon	White	CR-GW3211 E1	G4B6-G4E3-G4M6-G4M4 G406-G404-G4T7-G439 G47E-G49G-G40T-G41S -W-V	—		CR-GW3201 E1	G4B6-G4E3-G4M6-G4M4 G406-G404-G4T7-G439 G47E-G49G-G40T-G41S -WN-VN
Black nylon	Black	CR-G3211 E6	G4B6-G4E3-G4M6-G4M4 G406-G404-G4T7-G439 G47E-G49G-G40T-G41S -W-V	—		CR-G3201 E6	G4B6-G4E3-G4M6-G4M4 G406-G404-G4T7-G439 G47E-G49G-G40T-G41S -WN-VN

SH gas stroke: Standard 90mm Stroke 120mm available on request

Tall back

Adjustable arms

Polished fixed arms

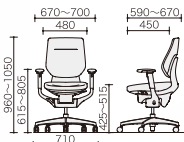
Nylon fixed arms



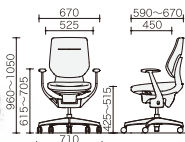
CR-GA3243 E6G4B6-WN



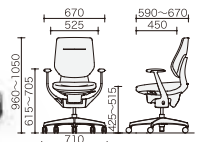
CR-GW3213 E1G439-W



CR-GA3243 E6G4M6-WN



CR-GW3203 E1G4T7-WN



5-star base	Body color	Adjustable arms		Polished fixed arms		Nylon fixed arms	
		Product code	Product code	Product code	Product code		
Polished aluminum	White	CR-GA3213 E1	G4B6-G4E3-G4M6-G4M4 G406-G404-G4T7-G439 G47E-G49G-G40T-G41S -W-V	CR-GA3243 E1	G4B6-G4E3-G4M6-G4M4 G406-G404-G4T7-G439 G47E-G49G-G40T-G41S -WN-VN	—	
	Black	CR-GA3213 E6	G4B6-G4E3-G4M6-G4M4 G406-G404-G4T7-G439 G47E-G49G-G40T-G41S -W-V	CR-GA3243 E6	G4B6-G4E3-G4M6-G4M4 G406-G404-G4T7-G439 G47E-G49G-G40T-G41S -WN-VN	—	
White nylon	White	CR-GW3213 E1	G4B6-G4E3-G4M6-G4M4 G406-G404-G4T7-G439 G47E-G49G-G40T-G41S -W-V	—		CR-GW3203 E1	G4B6-G4E3-G4M6-G4M4 G406-G404-G4T7-G439 G47E-G49G-G40T-G41S -WN-VN
Black nylon	Black	CR-G3213 E6	G4B6-G4E3-G4M6-G4M4 G406-G404-G4T7-G439 G47E-G49G-G40T-G41S -W-V	—		CR-G3203 E6	G4B6-G4E3-G4M6-G4M4 G406-G404-G4T7-G439 G47E-G49G-G40T-G41S -WN-VN

SH gas stroke: Standard 90mm Stroke 120mm available on request

Color options

Body color



E1
White



E6
Black

Back/Seat (Fabric)



G4B6
Black



G4E3
Soft grey



G4M6
Dark greige



G4M4
Medium greige



G4Q6
Deep green



G4Q4
Light olive



G4T7
Navy



G439
Ash turquoise



G47E
Deep purple



G49G
Ash pink



G40T
Soft terracotta



G41S
Olive yellow

*White nylon base : CleanTect coating as standard finish

Tall back with adjustable headrest



5-star base	Body color	Adjustable arms		Polished fixed arms		Nylon fixed arms			
		Product code		Product code		Product code			
Polished aluminum	White	CR-GA3215 E1	G4B6-G4E3-G4M6-G4M4 G4Q6-G4Q4-G4T7-G439 G47E-G49G-G40T-G41S	-W·V	CR-GA3245 E1	G4B6-G4E3-G4M6-G4M4 G4Q6-G4Q4-G4T7-G439 G47E-G49G-G40T-G41S	-WN·VN	—	
	Black	CR-GA3215 E6	G4B6-G4E3-G4M6-G4M4 G4Q6-G4Q4-G4T7-G439 G47E-G49G-G40T-G41S	-W·V	CR-GA3245 E6	G4B6-G4E3-G4M6-G4M4 G4Q6-G4Q4-G4T7-G439 G47E-G49G-G40T-G41S	-WN·VN	—	
White nylon	White	CR-GW3215 E1	G4B6-G4E3-G4M6-G4M4 G4Q6-G4Q4-G4T7-G439 G47E-G49G-G40T-G41S	-W·V	—	—	CR-GW3205 E1	G4B6-G4E3-G4M6-G4M4 G4Q6-G4Q4-G4T7-G439 G47E-G49G-G40T-G41S	-WN·VN
Black nylon	Black	CR-G3215 E6	G4B6-G4E3-G4M6-G4M4 G4Q6-G4Q4-G4T7-G439 G47E-G49G-G40T-G41S	-W·V	—	—	CR-G3205 E6	G4B6-G4E3-G4M6-G4M4 G4Q6-G4Q4-G4T7-G439 G47E-G49G-G40T-G41S	-WN·VN

SH gas stroke: Standard 90mm Stroke 120mm available on request

White nylon base
CleanTect coating



Stain-preventative coating on white coated 5-star bases will prevent dirt and shoe marks, as well as being easy to clean.

Body color x Castor color

White body (Color:E1)



White nylon Castors:
Grey (E4)

Black body (Color:E6)



Polished aluminum Castors:
Black (F6)

Adjustable headrest



Fabric headrest Mesh headrest
Angle adjustment to suit personal preference.
Adjustable angle: 30°

Castors



A-CS18 E4·F6
(-W) Hard nylon castors



A-CS18U E4·F6
(-V) Soft polyurethane castors

- At the end of product code (-W) denotes hard nylon castors suitable for soft flooring such as carpet.
- (-V) denotes soft polyurethane castors suitable for hard flooring such as wood floor or tile floors.
- To replace castors, contact your nearest sales office or authorized dealer.

Coat hanger



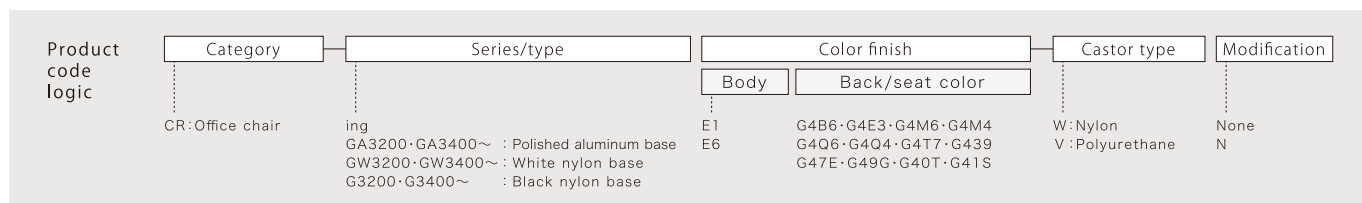
For fabric back
(Excludes wide back models)
CRH-G3200 E1·E6



For mesh back
CRH-G3000 E1·E6

Backrest shell	(Fabric) Polypropylene
Backrest frame	(Mesh) Reinforced nylon
Fabric	Polyester
Cushion	(Mesh) Elastic polyester
Seat/Seat shell	Slab urethane
Arms	Polypropylene Cushion: mold Polyurethane Fabric: Polyester
Base/5-star base	(Adjustable/Fixed) Reinforced nylon, Polyurethane skin mold (Aluminum fixed arms) Aluminum die-cast (Polished finish), Polyurethane skin mold
	(Nylon) Reinforced nylon
	(Aluminum) Aluminum die-cast
	Castor diameter: ø60mm

- The adjustable headrest can be retro-fitted on all Tall back models.
- Color of arm pads to match castor color



ing is recognized around the world.
Awarded design excellence in both Japan and overseas.



KOKUYO
www.kokuyo-furniture.com

- This product is a swivel office chair. It is not a medical equipment.
Please refrain from using the product for therapy treatment or purpose for medical treatment.
- When using the glide function, the seat of the product will move in accordance with the body movement in all directions (backward and forward, and sideways).
Avoid excessive burden or stress on the body with physical health and safety in mind when using the glide function.
- If pregnant, or have medical condition consult a physician first to use the glide function.
- If you experience pain, foreign sensations or abnormalities during use of the product, disengage the glide function by locking the glide function, and consult a physician.

- Specifications may vary, please contact your local KOKUYO's sales office or dealers for more information.
- Information in this brochure may change without further notice.
- All copyrights and intellectual property rights including trademarks and copywrite, remain the property of KOKUYO.
No part of this brochure may be reproduced without prior written permission from KOKUYO.

KOKUYO

Osaka | Tokyo | Shanghai | Beijing | Shenzhen | Hong Kong | Singapore | Kuala Lumpur | Bangkok
www.kokuyo-furniture.com

2020-052